

# Chairperson's annual report 2022/23

Nick Thwaites – Chair RPCC Board

## Key points

- Strategic plan
- Strong financial position
- Exceptional utilisation
- Internal renovations
- Staff of RPCC

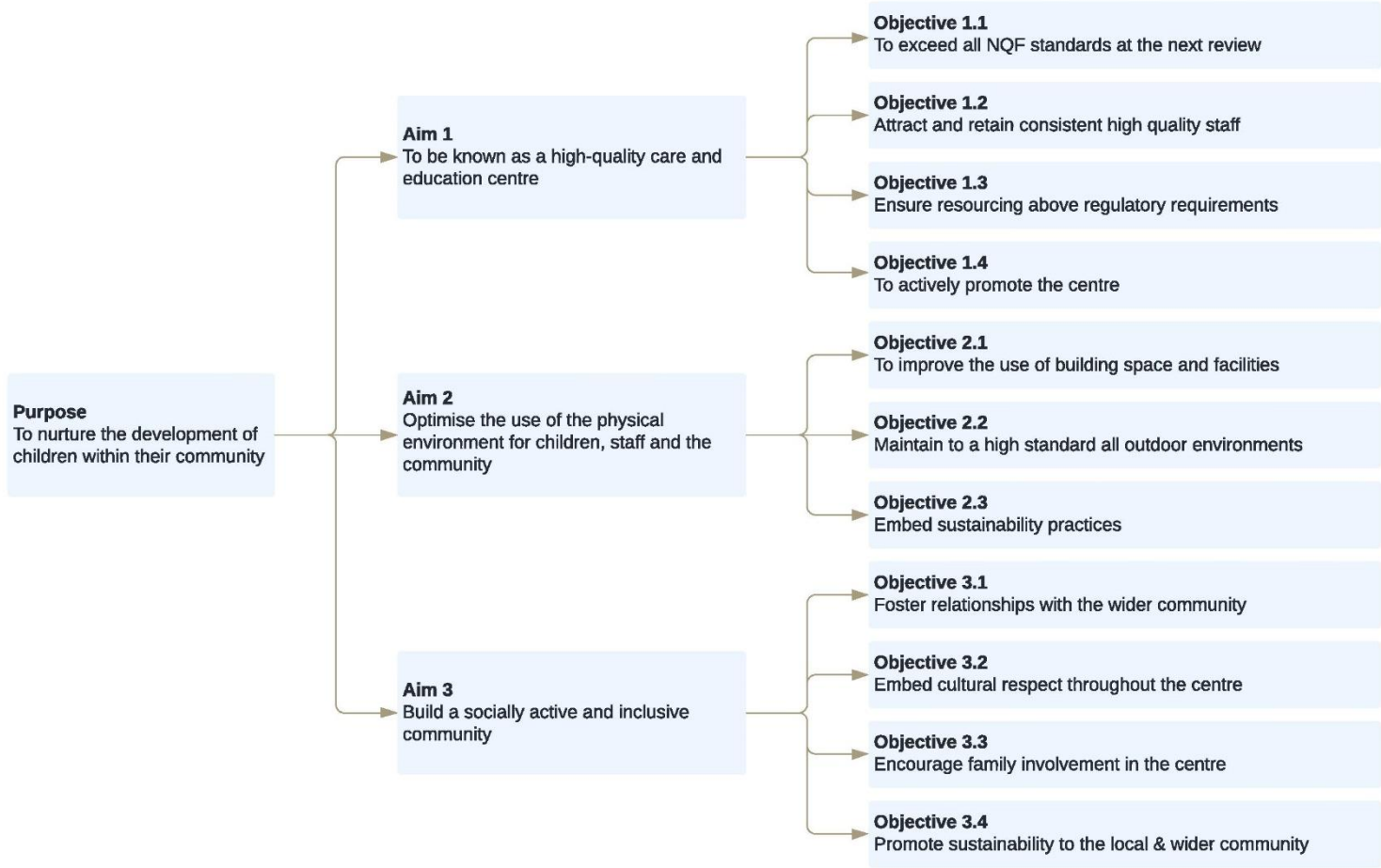
# Thanks to the 2022/23 RPCC Board

- Rachel Sneddon – Deputy Chair
- Nikki Davies – Secretary
- Michaela Banks – Treasurer
- Angela Marsh
- Kyle Thompson
- Sarah Rogers – Director

# Strategic plan 2021-2025



**Vision**  
We believe every child deserves to learn, grow and develop through trust, nurturing relationships, diverse play and quality experiences in a caring community.



**Values**  
Childhood, Caring, Community, Inclusion, Quality

# Strong financial position

- Treasurer's report to come
- Regular financial oversight conducted by the Board
- Significant savings to assist with centre renovation
- Maintenance of sustainable fee levels
- Maintain above award pay rates

# Exceptional utilisation

- RPCC continues to improve utilisation each year
- Fantastic management of numbers, ratios and waiting list by Sarah
- Capacity: 59

	FTE's
August 2023	57.5
August 2022	56
August 2021	57
August 2020	56
August 2019	52
August 2018	52
August 2017	51

# Internal Renovations

- Revised scope
- WG.Build Co selected as builder
- Finance options
- Plans progressing (Andrea Architects, engineers, WG Build Co)
- Input from RPCC staff

# Staff of RPCC

- Strong leaders in each room
- Educational leader (Kylie)
- Assistant Director (Lisa)
- Kitchen manager (Kim)
- Director (Sarah)

Thank you.