

Chairperson's annual report 2023/24

Rachael Snedden – RPCC Board Chair

Key points

- Staff of RPCC
- Exceptional utilisation
- Internal renovations
- Strong financial position
- Strategic plan

Thanks to the 2023/24 RPCC Board

- Shannon Broughton– Deputy Chair
- Angela Marsh – Secretary
- Michelangelo Bolognese – Treasurer
- Agustina Gancia
- Katya Hill
- Sarah Rogers – Director

Staff of RPCC

- Strong leaders in each room
- Educational leader (Kylie)
- Assistant Director (Lisa)
- Kitchen manager (Kim)
- Director (Sarah)

Exceptional utilisation

- RPCC continues to improve utilisation each year
- Fantastic management of numbers, ratios and waiting list by Sarah
- Capacity: 59

Year	FTE
August 2024	57.2
August 2023	57.5
August 2022	56
August 2021	57
August 2020	56
August 2019	52
August 2018	52
August 2017	51

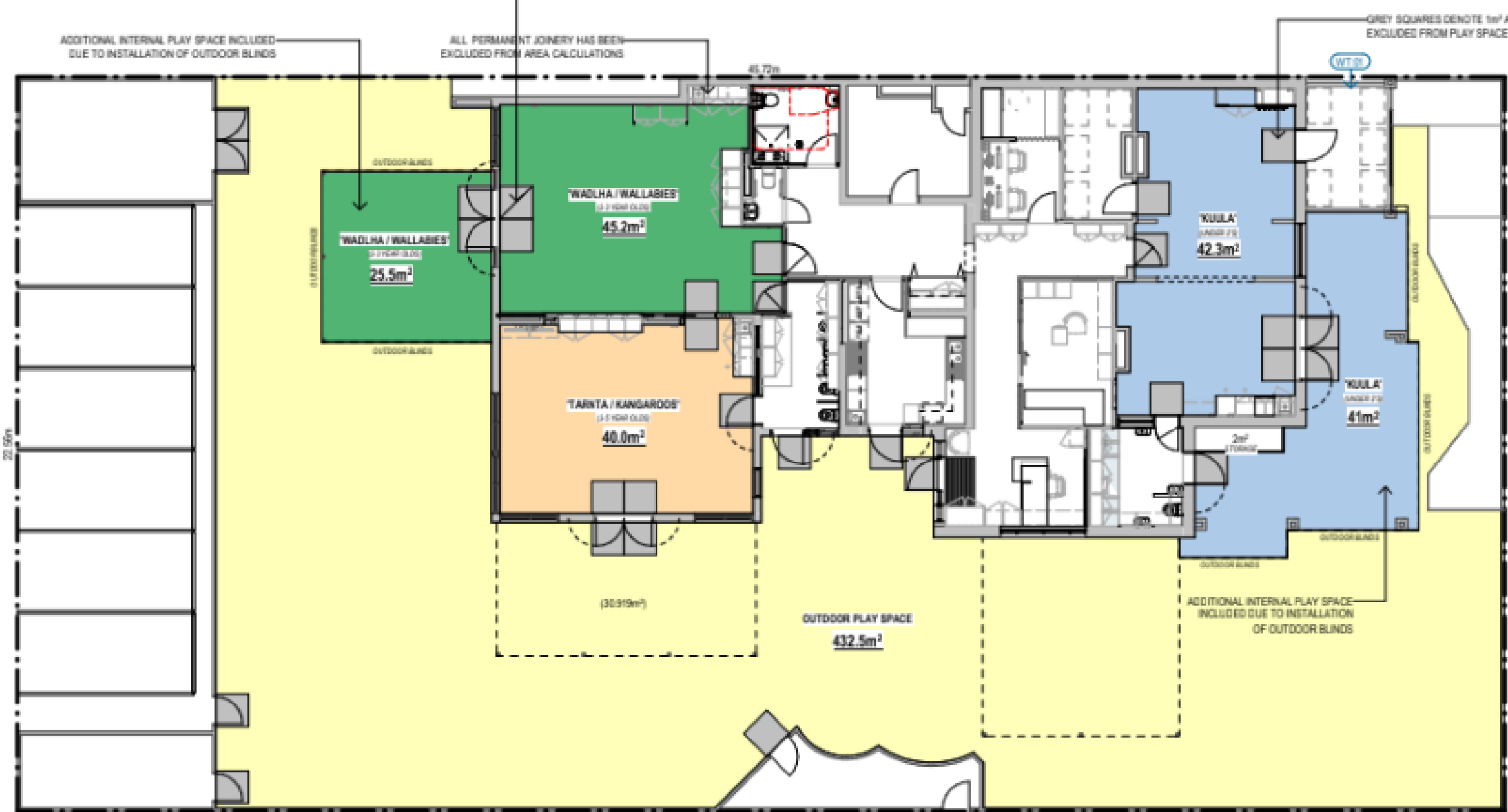
Internal Renovations

- WG.Build Co selected as builder
- Plans finalised and building approvals attained
- Finance progressing
- Licencing approvals progressing
- Staged build is planned
- Completion expected mid-2025

ADDITIONAL INTERNAL PLAY SPACE INCLUDED
DUE TO INSTALLATION OF OUTDOOR BLINDS

ALL PERMANENT JOINERY HAS BEEN
EXCLUDED FROM AREA CALCULATIONS

GREY SQUARES DENOTE 1m² AREA
EXCLUDED FROM PLAY SPACE



WATSON AVENUE

CLOSE STREET

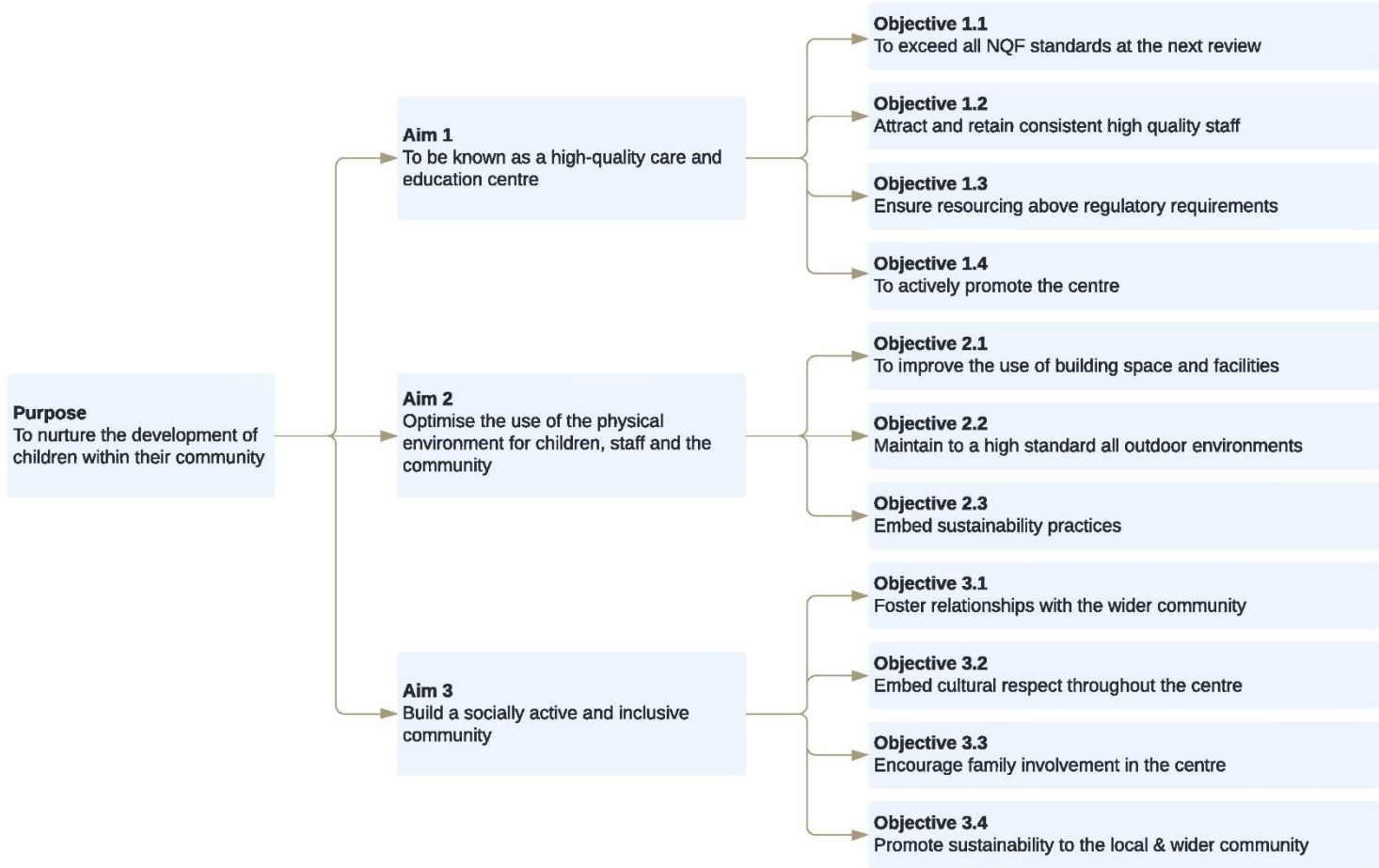
Strong financial position

- Treasurer's report to come
- Regular financial oversight conducted by the Board
- Significant savings to contribute to renovation
- Maintenance of sustainable fee levels
- Maintain above award pay rates

Strategic plan 2021-2025



Vision
We believe every child deserves to learn, grow and develop through trust, nurturing relationships, diverse play and quality experiences in a caring community.



Values
Childhood, Caring, Community, Inclusion, Quality